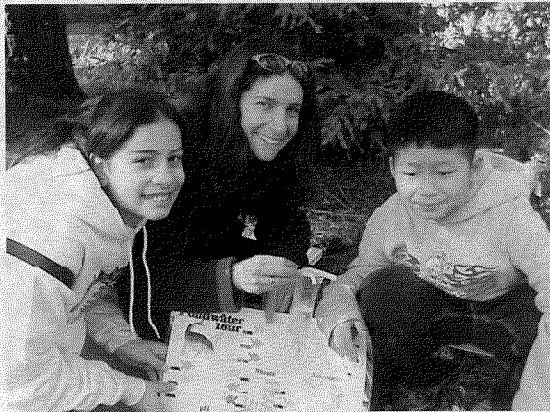


WINDOWS TO OUR WATERSHED

The Santa Clara County Office of Education is proud to offer its newest program, Windows to Our Watershed (WOW). This unique program takes learning from the classroom to local creeks, rivers, and bay and encourages learning through interactive science lessons.

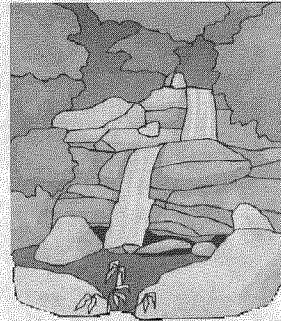


PROGRAM DESCRIPTION

Two program components offer schools flexible learning opportunities for 3rd-6th graders. On school site and off school site explorations will introduce students to marine and freshwater communities, and provide direction for watershed stewardship through hands-on learning programs.

THE CURRICULUM

The activities chosen as well as the type of field study are especially geared to individual grade levels. All activities are correlated to meet California Science Content Standards.



EXPLORATIONS

Each exploration will begin with a brief ecological introduction to the area, interactive activities, and engaging field studies.

ON-SITE EXPLORATIONS

The on-site portion of the program targets school sites that have a stream, creek or pond within walking distance and will help schools take advantage of local ongoing learning opportunities.

OFF-SITE EXPLORATIONS

The off-site portion of the program will be conducted at a slough or wetland near the school.

COST

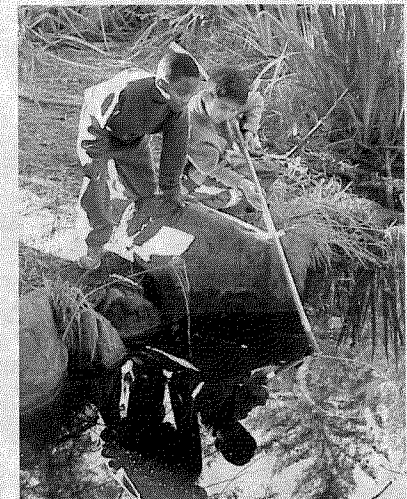
On-site investigation:

\$75/class for 1.5 hours

Off-site investigation:

\$125/class for 2.5 hours

Schools may select either program or participate in both.



SCHEDULING

If you have any questions or would like to schedule a program, please contact Walden West Science Center at (408) 867-5950.